

MONTHLY MEMBERSHIP PROGRESS REPORT

District 202 J

Results as of: 4/30/2026

GMT:

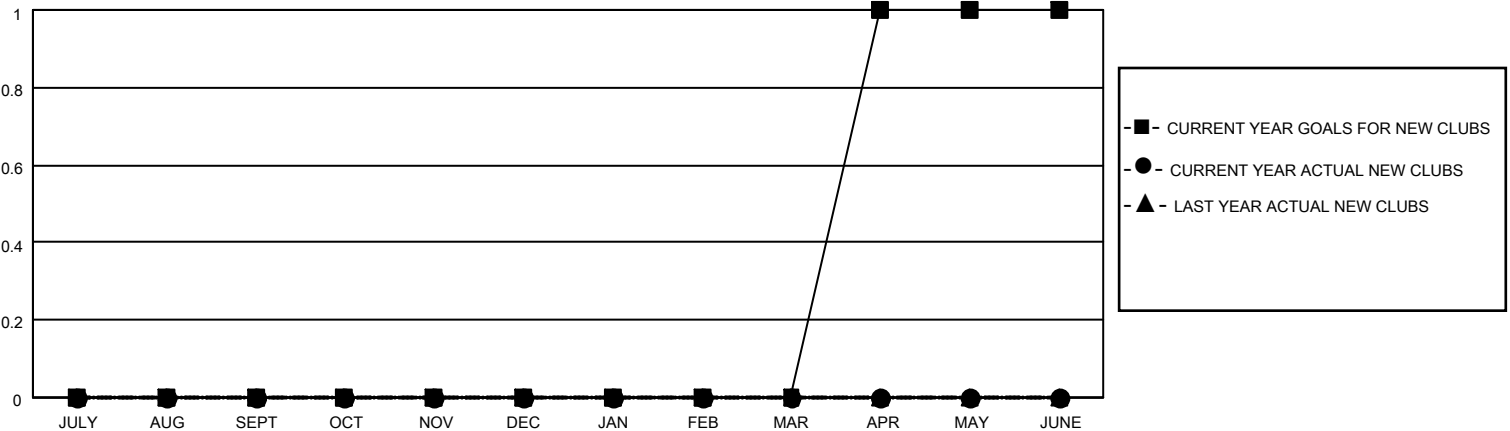
LOCATION NEW ZEALAND

GMT CA

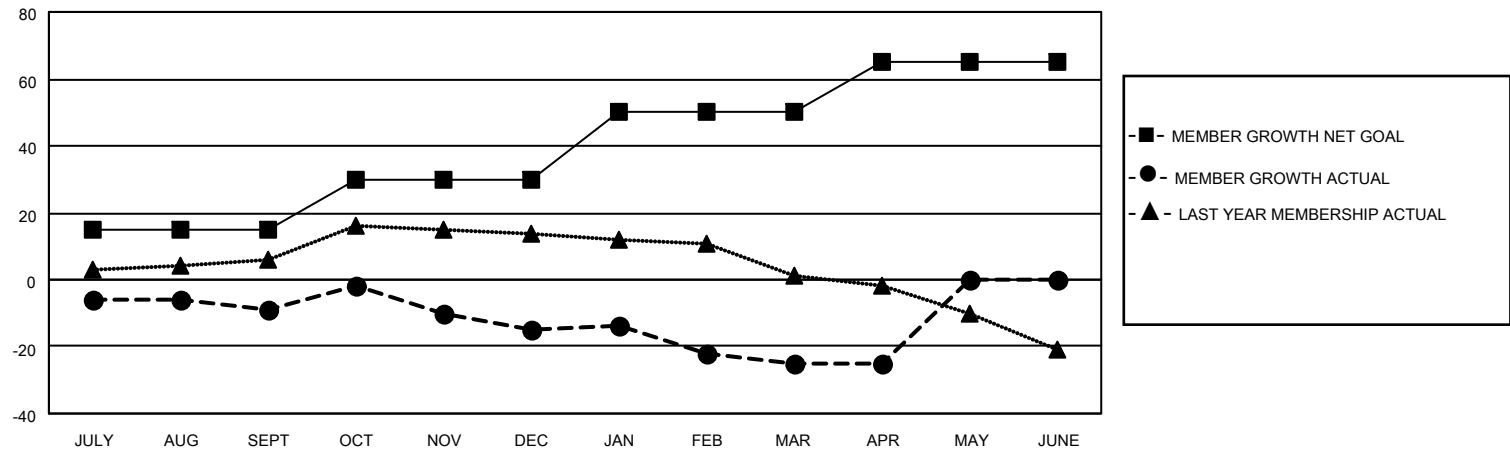
| Clubs | | | |
|-----------------------|---------------|-----------|---------------|
| RESULTS FOR 2025-2026 | | | |
| QUARTER | NEW CLUB GOAL | NEW CLUBS | DROPPED CLUBS |
| JULY/AUG/SEPT | 0 | 0 | 0 |
| OCT/NOV/DEC | 0 | 0 | 0 |
| JAN/FEB/MAR | 0 | 0 | 0 |
| APR/MAY/JUNE | 1 | 0 | 0 |

| Members | | | |
|-----------------------|------------------------|----------------------|--|
| RESULTS FOR 2025-2026 | | | |
| QUARTER | MEMBER GROWTH NET GOAL | MEMBER GROWTH ACTUAL | DROPPED MEMBERS ACTUAL (including transfers) |
| JULY/AUG/SEPT | 15 | 21 | 24 |
| OCT/NOV/DEC | 15 | 17 | 22 |
| JAN/FEB/MAR | 20 | 11 | 20 |
| APR/MAY/JUNE | 15 | 8 | 8 |

GOALS AND ACTUAL NEW CLUBS CUMULATIVE



GOALS AND ACTUAL MEMBERS CUMULATIVE



| | | |
|---|---|--|
| DROPPED CLUBS: 0 | 20 CLUBS OF 33 ADDED 1 OR MORE NEW MEMBERS | GENDER DISTRIBUTION MALE 813 (73.57%) FEMALE 292 (26.43%) |
| DROPPED MEMBERS DECEASED 14 CLUB CANCELLED 0 OTHER 60 TOTAL 74 | CLICK HERE FOR CUMULATIVE MEMBERSHIP DATA | TOTAL FAMILY UNIT MEMBERS 40 FAMILY MEMBERS PAYING HALF DUES 20 |